

TRIANGLE BUILDING

1800 NW 16th Avenue, Portland, Oregon

FOR LEASE



- ✦ 6,196 SF Available Jan. 1, 2009
- ✦ USGBC LEED Silver
- ✦ ABC National Green Building Award
- ✦ \$22.50/SF NNN
- ✦ Exposed Ceilings
- ✦ Unique Space
- ✦ Great Neighborhood Amenities Including Sydney's Cafe, Carlyle Restaurant, Dockside, & Grand Central Bakery

For more information contact:

Peter Andrews

pandrews@melvinmark.com

Nick Ehlen

nehlen@melvinmark.com



MELVIN MARK BROKERAGE COMPANY

111 SW Columbia, Suite 1380 | Portland, OR 97201

P: (503) 223-9203 | F: (503) 223-4606

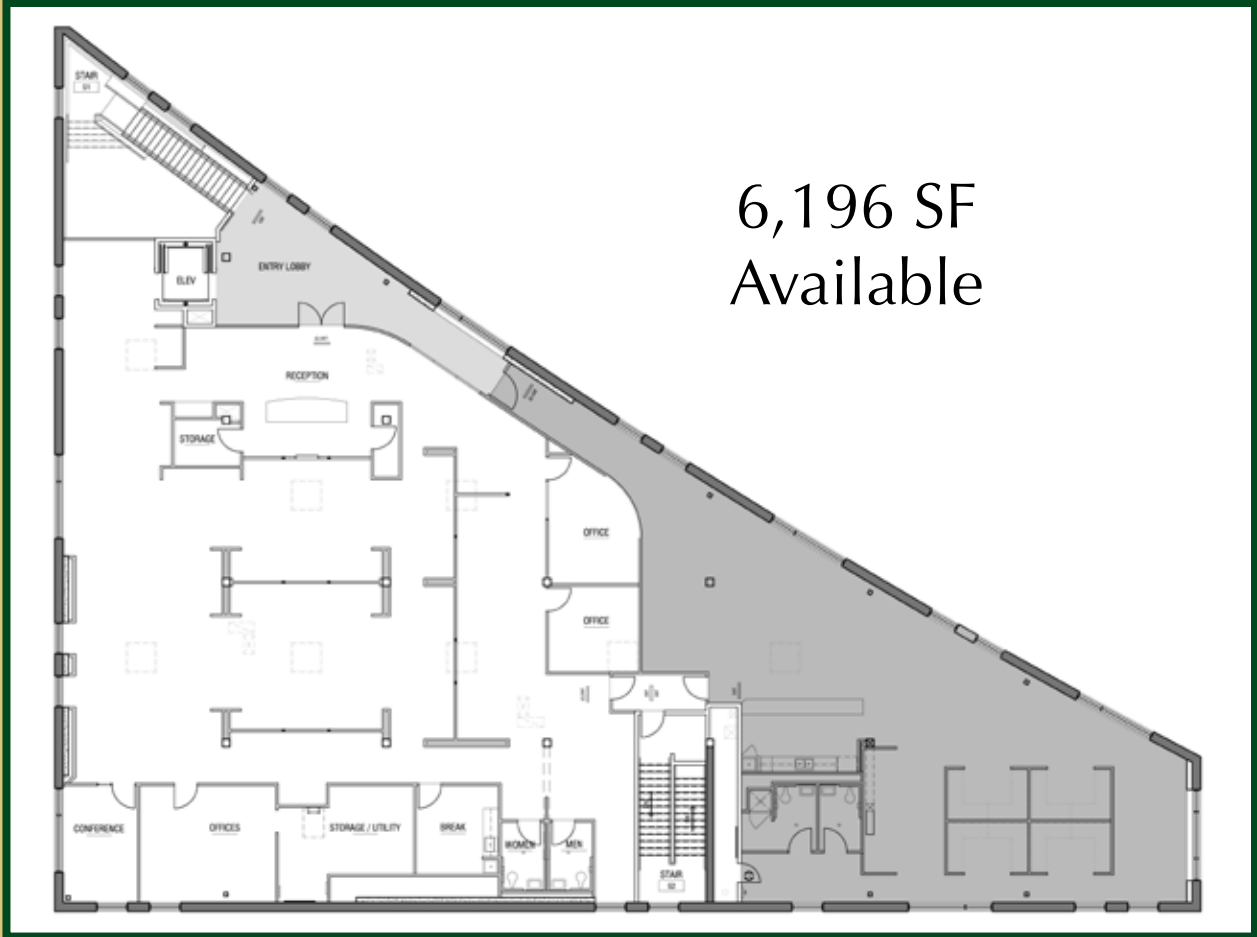
Melvin Mark Brokerage Company is a member of the **CORE** Network.

The information contained herein has been obtained from sources we deem reliable. We do not, however guarantee its accuracy. All information should be verified prior to purchase or lease.

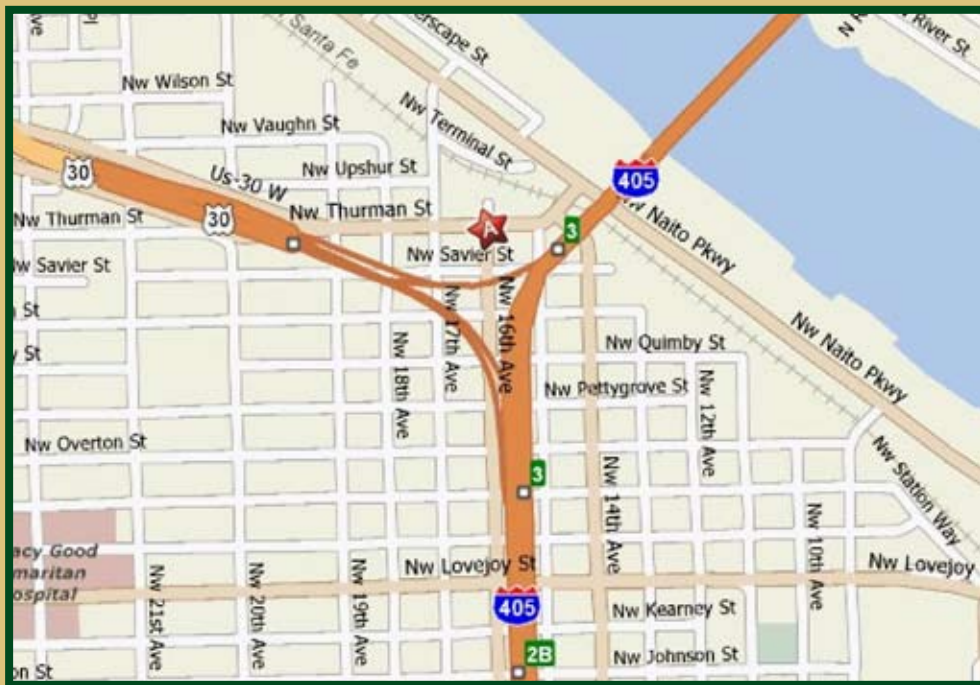
TRIANGLE BUILDING

1800 NW 16th Avenue, Portland, Oregon

6,196 SF
Available



PROPERTY HIGHLIGHTS



The information contained herein has been obtained by sources we deem to be reliable. We do not, however, guarantee its accuracy. All information should be verified prior to purchase or lease.